


PROMINENCE
ESTATES



RESIDENTIAL
PROPERTY EXPERTS

COVENTRY, WARWICKSHIRE
& LEAMINGTON SPA

FOLESHILL ROAD,
FOLESHILL, COVENTRY, CV6 5AH

£750 PCM

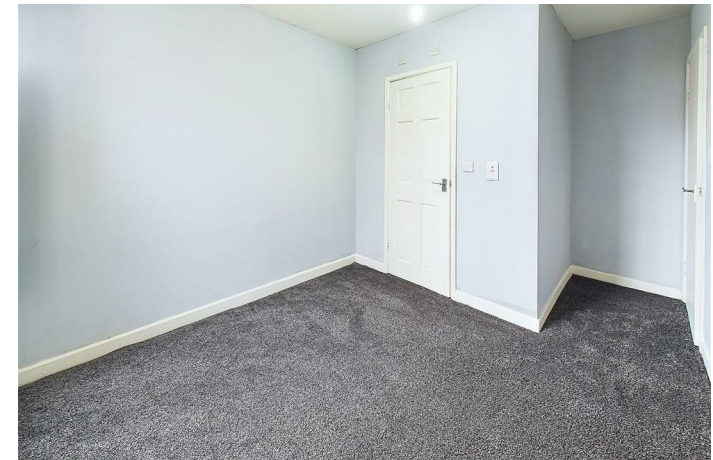
FOLESHILL ROAD



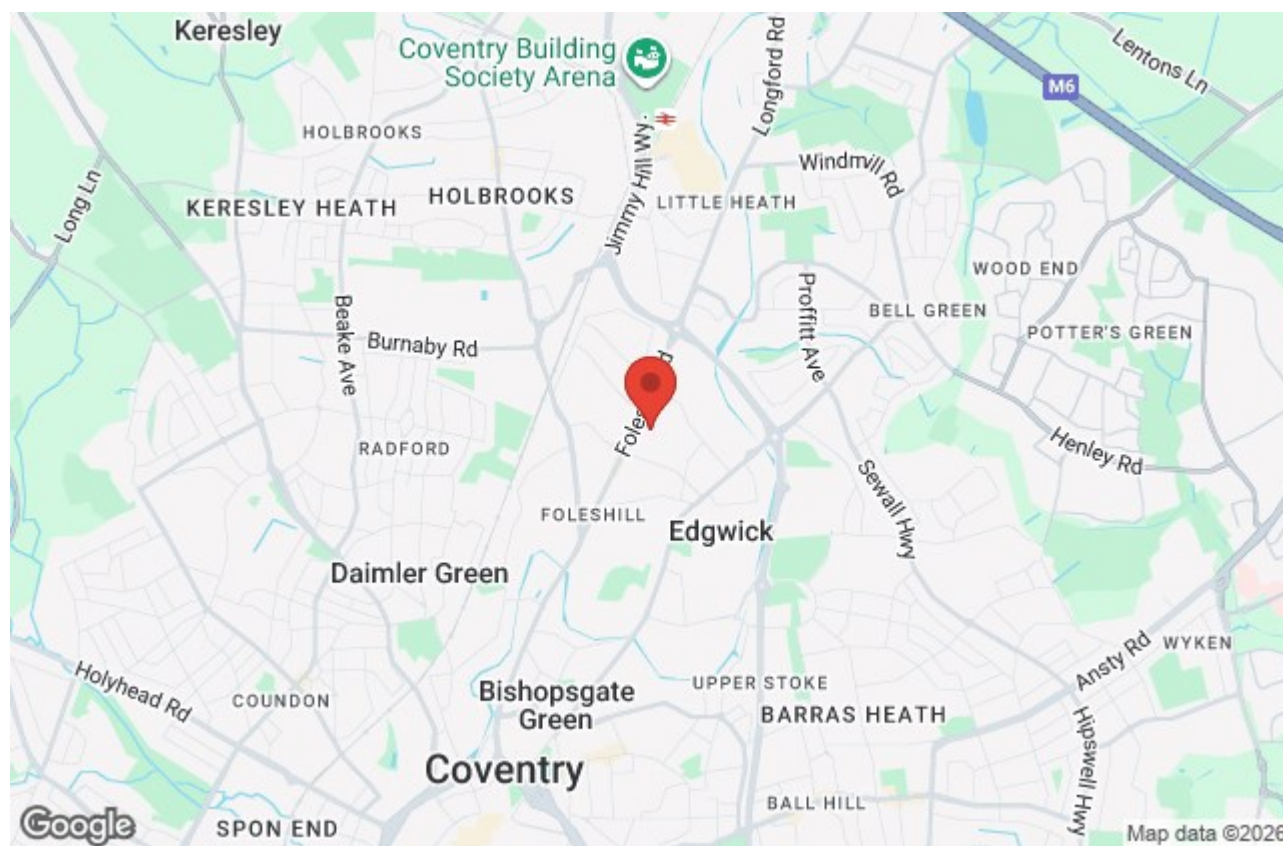
PROMINENCE
— ESTATES —

Modern one bedroom flat located in Foleshill and within a commutable distance to Coventry City Centre. This newly renovated one bedroom flat benefits from newly fitted carpets and flooring throughout, modern kitchen with integrated electric hob, electric cooker with additional space for a washing machine, fridge/freezer and a modern shower room with shower cubicle, WC and sink. The flat comes with separate bedroom and a separate kitchen/living room

This property must be viewed to be appreciated. For further information or to book your viewing call our team today.







Prominence Estates
5 Queen Isabels Avenue,
Cheylesmore,
Coventry,
CV3 5GE

02476 309 826
lettings@prominenceestates.com
www.prominenceestates.com


PROMINENCE
— ESTATES —